



# AXIS

PANNER & SOFTWARE



## Introducing

Axis™, the essential addition for any serious **digidesign** Pro Tools® surround mixing studio. The Axis™ system includes both software and hardware designed to provide professional control of your surround mix. The Axis™ system include the Axis™ Panner professional joystick which offers an industrial quality mechanism built into an elegant yet rugged steel chassis. An ADB or USB device, it allows easy connection to your Macintosh computer, without additional interfacing, or tying up a serial port, and provides smooth control of surround position.

The core of the system is the Axis™ software which interfaces the Axis Panner and other devices with the surround software you use within Pro Tools®. Other supported devices include Gallery's MissionControl panner, the JLC Cooper MCS Panner, Generic Midi controllers, and Wacom Pen tablets (where the pen tip controls the mouse and the eraser controls the pan position).

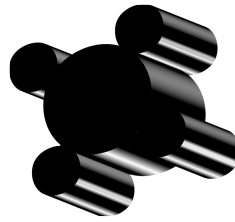
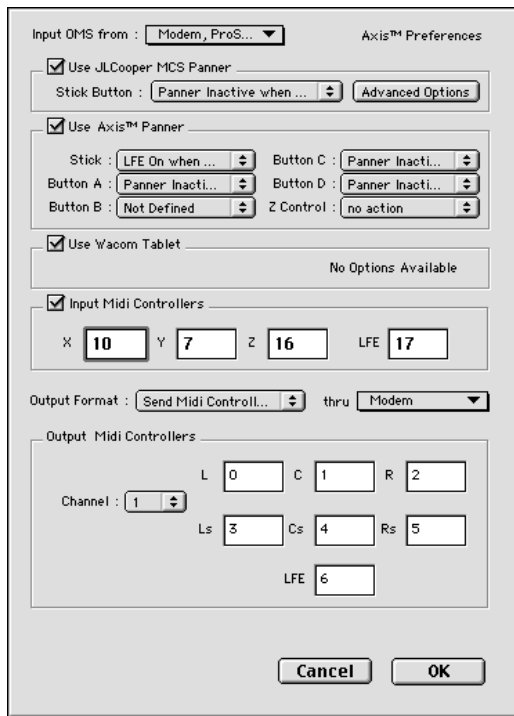
Axis™ provides a device independent control mechanism to software developers allowing TDM plug-ins, applications and even system extensions to benefit from external control by any Axis compliant device. Axis is already supported by Kind Of Loud Technology's SmartPan TDM plug-in which offers 5.1 and 7.1 panning, and any other software which can accept Midi controllers as input parameters, or which is modified to support the Axis™API. Other TDM Plug-ins and applications will offer support in future, and Axis™ will support additional hardware peripherals as they become available



top Panner (ADB or USB)

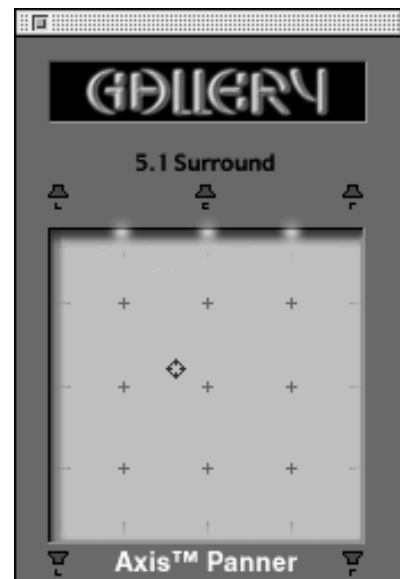
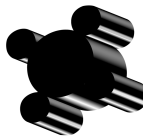
# AXIS

## PANNER & SOFTWARE



The Axis™ software is a device independent layer linking compatible TDM plugs and other software with your Axis Joystick or other peripheral. To the client software all devices look the same thanks to the Axis API. Axis™ allows you to configure how your joystick controls the target software, including assigning button functions. Although Axis is primarily designed to pass peripheral data into the Axis API for collection by plug ins like Smartpan, it can also control software directly for simpler applications. For example, even Pro Tools users without TDM can achieve basic surround panning by setting Axis to automatically control 5 Pro Tools faders to localise a sound across 5 speakers.

Axis also supports the JLCoooper MCS Panner Midi Joystick, translating the data sent, into Axis API data for collection by plug ins. All the buttons, encoders and z-axis data are user configurable.



TO CONTACT GALLERY :-  
 CALL +44 (0)171 431 6260  
 FAX +44 (0)171 435 8134  
 EMAIL [axis@gallery.co.uk](mailto:axis@gallery.co.uk)  
 WEB [www.gallery.co.uk](http://www.gallery.co.uk)



COMPATIBLE WITH  
**SmartPan Pro TDM Plug-in**  
 FROM KIND OF LOUD TECHNOLOGIES  
[WWW.KINDOLOUD.COM](http://WWW.KINDOLOUD.COM)